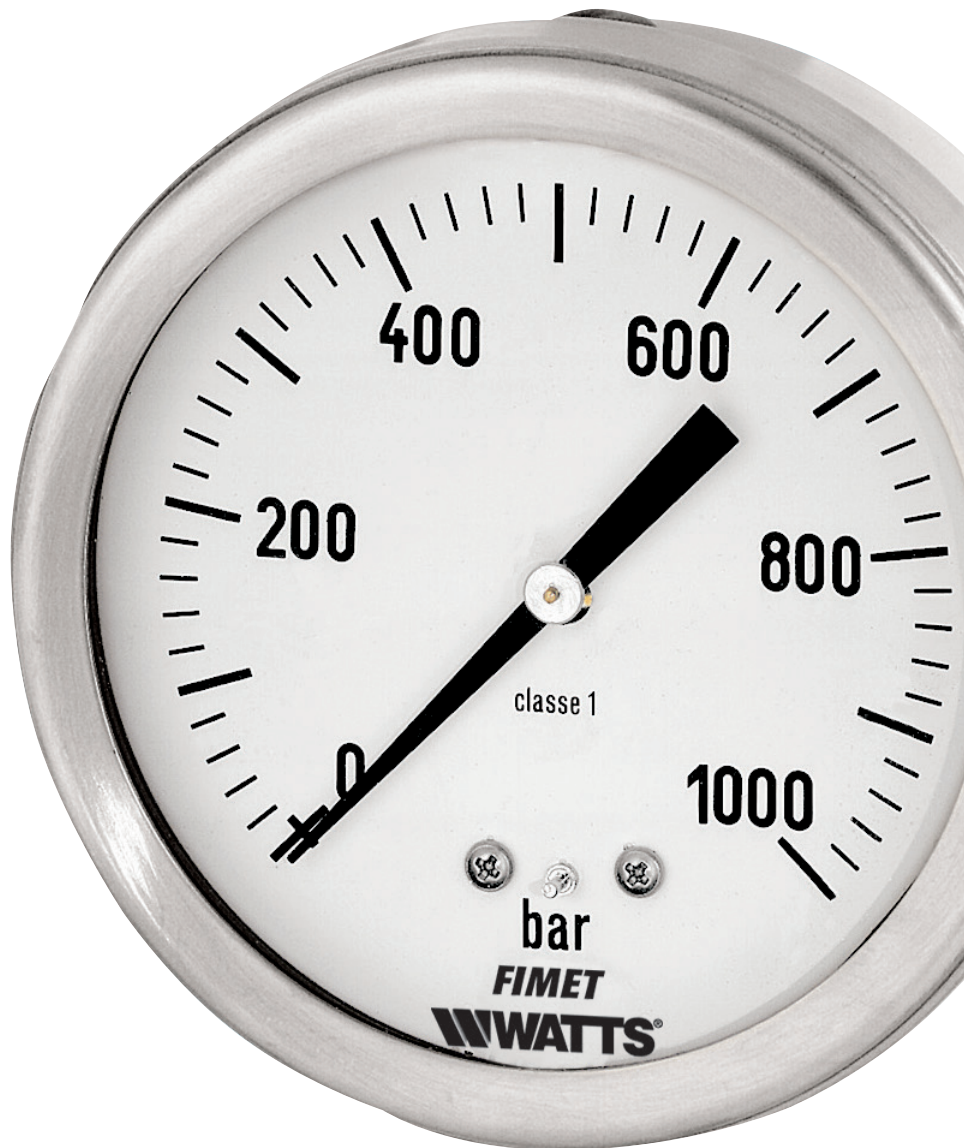


MX3A

Bourdon tube pressure gauges

Technical Data Sheet



Description

Dry - back entry. For special industrial applications, chemical, food and shipbuilding industries.



MX3A-63

DN63 pressure gauges.

| Part No | Pressure Range | Connection | Options* | Box/Master | Min. order |
|---------|----------------|------------|----------|------------|------------|
| | vacuum+low bar | G1/4B | LF | 1/1 | 1 |
| | medium bar | G1/4B | LF | 1/1 | 1 |
| | high bar | G1/4B | LF | 1/1 | 1 |
| | 400/over bar | G1/4B | LF | 1/1 | 1 |



MX3A-100

DN100 pressure gauges.

| Part No | Pressure Range | Connection | Options* | Box/Master | Min. order |
|---------|----------------|------------|----------|------------|------------|
| | vacuum+low bar | G1/2B | LF | 1/1 | 1 |
| | medium bar | G1/2B | LF | 1/1 | 1 |
| | high bar | G1/2B | LF | 1/1 | 1 |
| | 400/over bar | G1/2B | LF | 1/1 | 1 |



MX3A-160

DN160 pressure gauges.

| Part No | Pressure Range | Connection | Options* | Box/Master | Min. order |
|---------|----------------|------------|----------|------------|------------|
| | vacuum+low bar | G1/2B | LF | 1/1 | 1 |
| | medium bar | G1/2B | LF | 1/1 | 1 |
| | high bar | G1/2B | LF | 1/1 | 1 |
| | 400/over bar | G1/2B | LF | 1/1 | 1 |

*Options included

LF = Fimet Watts logo on the dial

Customizations per minimum order quantity

| Customizations | Model |
|--------------------------------|-----------------|
| Test Certificate (max 600 bar) | MX3A-63/100/160 |
| Atex Certificate | MX3A-63/100/160 |
| QX = Special sections dial | MX3A-63/100/160 |

QX - Scale range on dial

| Range mbar | No of division | Scale interval |
|------------|----------------|----------------|
| -1-0 | 0.02 | 50 |
| -1 +0.6 | 0.02 | 80 |
| -1+1.5 | 0.05 | 50 |
| -1+3 | 0.1 | 40 |
| -1+5 | 0.1 | 60 |
| -1+9 | 0.2 | 50 |
| -1+15 | 0.2 | 80 |

| Range Low | No of division | Scale interval |
|-----------|----------------|----------------|
| 0- 0.6 | 0.01 | 60 |
| 0-1 | 0.02 | 50 |
| 0- 1.6 | 0.02 | 80 |

| Range Medium | No of division | Scale interval |
|--------------|----------------|----------------|
| 0-2.5 | 0.05 | 50 |
| 0-4 | 0.1 | 40 |
| 0 - 6 | 0.1 | 60 |
| 0 - 10 | 0.2 | 50 |
| 0 - 16 | 0.2 | 80 |
| 0 - 25 | 0.5 | 50 |
| 0 - 40 | 1 | 40 |

| Range High | No of division | Scale interval |
|------------|----------------|----------------|
| 0 - 60 | 1 | 60 |
| 0 - 100 | 2 | 50 |
| 0 - 160 | 2 | 80 |
| 0 - 250 | 5 | 50 |
| 0 - 400 | 10 | 40 |
| 0 - 600 | 10 | 60 |
| 0 - 1000 | 20 | 50 |
| 0 - 1600* | 50 | 32 |

* Available only DN160

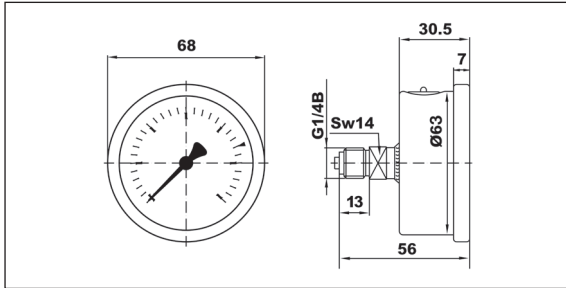
Features

| Materials | |
|---------------------|---|
| Case | Stainless steel with pressure relief device AISI 304 with adjustment hole |
| 3-hole rear flange | Stainless steel AISI 304 |
| Window | Safety glass |
| Dial | White aluminium, black scale and graduation |
| Pointer | Aluminium, black |
| Pressure connection | Stainless steel AISI 316L |
| Pressure element | Bourdon tube stainless AISI 316L ≤ 60 bar circle > 60 bar helical |
| Movement | Stainless steel |

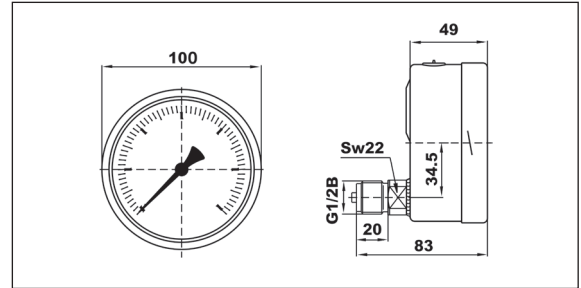
| Technical features | DN63 | DN100-160 |
|----------------------|---|---|
| Design | EN 837-1 | EN 837-1 |
| Working pressure | Steady: 75% of full scale value Fluctuating: 60% of full scale value Short time: full scale value | Steady: 75% of full scale value Fluctuating: 60% of full scale value Short time: full scale value |
| Temperature limits | Ambient: -20 ... +60 °C; Medium: +150 °C maximum Storage: -20 ... +60 °C | Ambient: -20 ... +60 °C; Medium: +150 °C maximum Storage: -20 ... +60 °C |
| Temperature effect | Deviation from reference temperature (+20°C): ±0,04%/1K of the span | Deviation from reference temperature (+20°C): ±0,04%/1K of the span |
| Accuracy class | cl. 1.6 | cl. 1.0 |
| Degree of protection | IP 65 | IP 65 |
| Individual weight: | | |
| MX3A-63 | 0.200 kg | 0.200 kg |
| MX3A-100 | 0.800 kg | 0.800 kg |
| MX3A-160 | 1.200 kg | 1.200 kg |

Overall dimensions (mm)

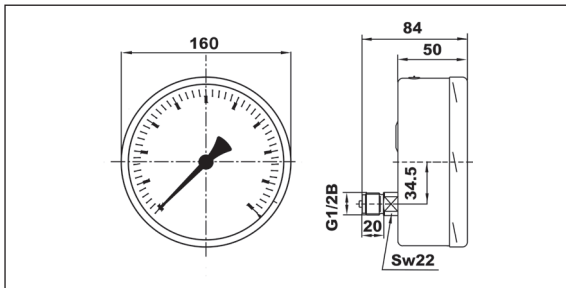
MX3A-63



MX3A-100



MX3A-160



Specification text

Bourdon tube all stainless steel pressure gauge **MX3A Series**, Watts Brand, for special industrial applications, chemical, food and shipbuilding industries. **DRY all stainless steel** DN 63-100-160 mm, **back connection**. Vacuum measures range -1/0 at high pressure up to 1000 bar (DN 63-100). Vacuum measures range -1/0 at high pressure up to 1600 bar (DN160). Temperature limits +150°C. Accuracy class 1.6 (DN 63) – 1.0 (DN 100-160). **Compliant with EN 837-1**



The descriptions and photographs contained in this product specification sheet are supplied by way of information only and are not binding.
Watts Industries reserves the right to carry out any technical and design improvements to its products without prior notice. Warranty: All sales and contracts for sale are expressly conditioned on the buyer's assent to Watts terms and conditions found on its website at www.wattswater.eu. Watts hereby objects to any term, different from or additional to Watts terms, contained in any buyer communication in any form, unless agreed to in a writing signed by an officer of Watts.



Watts Industries Italia S.r.l.
Via Brenno, 21 • 20853 Biassono (MB) • Italy
Tel. +39 039 4986.1 • Fax +39 039 4986.222
infowattsitatia@wattswater.com • www.watts.com