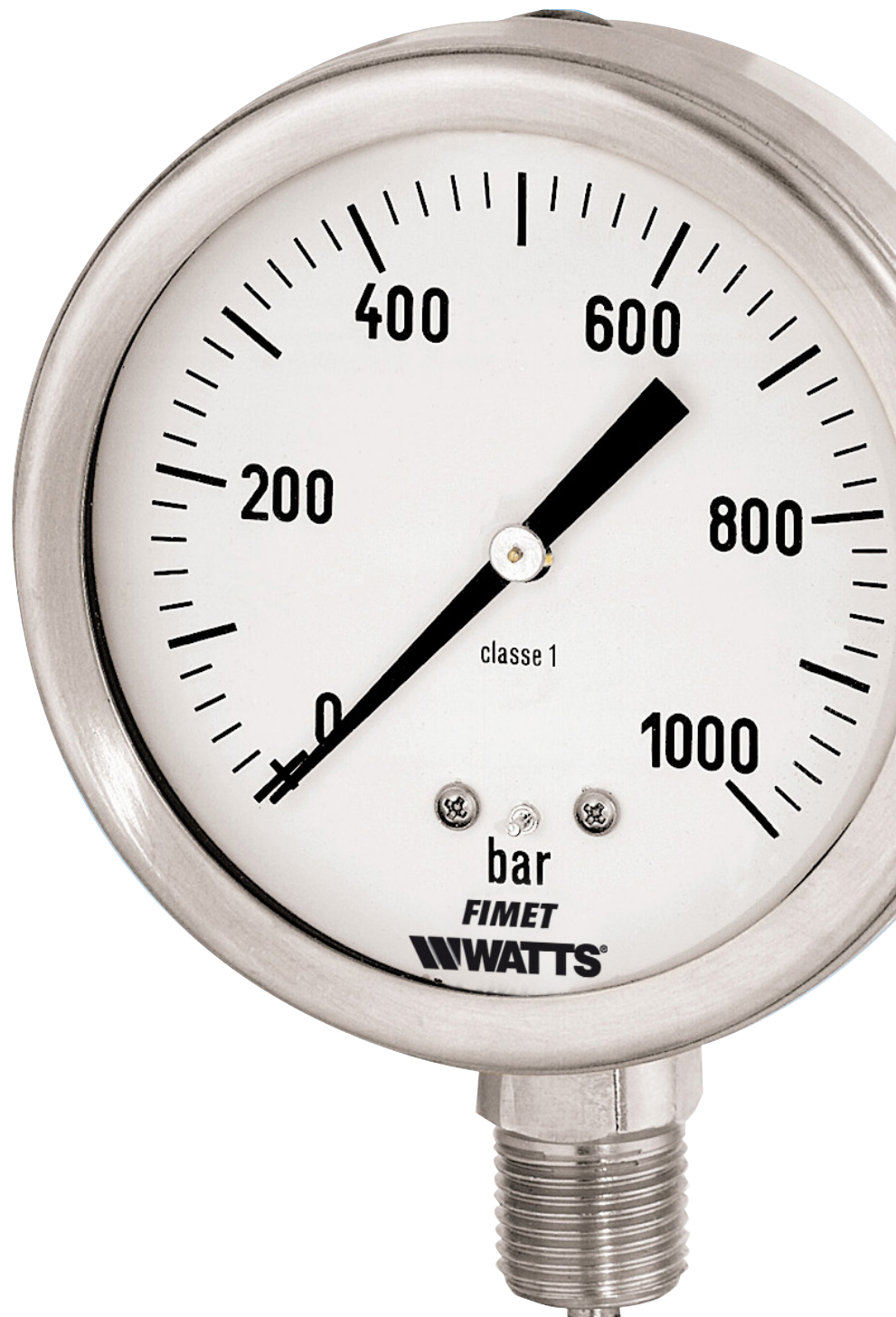


MXG1

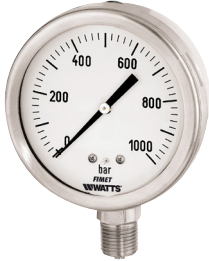
Bourdon tube pressure gauges

Technical Data Sheet



Description

Glycerine filled - bottom entry. For special industrial applications, chemical, food and shipbuilding industries.



MXG1-63

DN63 pressure gauges.

Part No	Pressure Range	Connection	Options*	Box/Master	Min. order
PZ6E3401BJ00	-1/0 bar	G1/4B	LF	1/1	1
PZ6E3401BJ01	-1/0.6 bar	G1/4B	LF	1/1	1
PZ6E3503BJ01	-1+1.5 bar	G1/4B	LF	1/1	1
	-1+3 bar	G1/4B		1/1	1
PZ6E3406BJ00	-1+5 bar	G1/4B	LF	1/1	1
PZ6E3410BJ00	-1+9 bar	G1/4B	LF	1/1	1
PZ6E3416BJ00	-1+15 bar	G1/4B	LF	1/1	1
PZ6E3401BJ01	0-0.6 bar	G1/4B	LF	1/1	1
PZ6E3401BJ02	0-1 bar	G1/4B	LF	1/1	1
PZ6E3402BJ00	0-1.6 bar	G1/4B	LF	1/1	1
PZ6E3503BJ00	0-2.5 bar	G1/4B	LF	1/1	1
PZ6E3504BJ00	0-4 bar	G1/4B	LF	1/1	1
PZ6E3506BJ00	0-6 bar	G1/4B	LF	1/1	1
PZ6E3510BJ00	0-10 bar	G1/4B	LF	1/1	1
PZ6E3516BJ00	0-16 bar	G1/4B	LF	1/1	1
PZ6E3525BJ00	0-25 bar	G1/4B	LF	1/1	1
PZ6E3540BJ00	0-40 bar	G1/4B	LF	1/1	1
PZ6E3644BJ00	0-60 bar	G1/4B	LF	1/1	1
PZ6E3648BJ00	0-100 bar	G1/4B	LF	1/1	1
PZ6E3654BJ00	0-160 bar	G1/4B	LF	1/1	1
PZ6E3660BJ00	0-250 bar	G1/4B	LF	1/1	1
PZ6E3666BJ00	0-400 bar	G1/4B	LF	1/1	1
PZ6E3670BJ00	0-600 bar	G1/4B	LF	1/1	1
PZ6E3672BJ00	0-1000 bar	G1/4B	LF	1/1	1



MXG1-100

DN100 pressure gauges.

Part No	Pressure Range	Connection Options*		Box/Master	Min. order
PZ6E5401BL00	-1/0 bar	G1/2B	LF	1/1	1
PZ6E5402BL01	-1/0.6 bar	G1/2B	LF	1/1	1
PZ6E5403BL00	-1+1.5 bar	G1/2B	LF	1/1	1
PZ6E5404BL01	-1+3 bar	G1/2B	LF	1/1	1
PZ6E5406BL00	-1+5 bar	G1/2B	LF	1/1	1
PZ6E5410BL00	-1+9 bar	G1/2B	LF	1/1	1
	-1+15 bar	G1/2B		1/1	1
PZ6E5401BL01	0-0.6 bar	G1/2B	LF	1/1	1
PZ6E5401BL02	0-1 bar	G1/2B	LF	1/1	1
PZ6E5402BL00	0-1.6 bar	G1/2B	LF	1/1	1
PZ6E5503BL00	0-2.5 bar	G1/2B	LF	1/1	1
PZ6E5504BL00	0-4 bar	G1/2B	LF	1/1	1
PZ6E5506BL00	0-6 bar	G1/2B	LF	1/1	1
PZ6E5510BL00	0-10 bar	G1/2B	LF	1/1	1
PZ6E5516BL00	0-16 bar	G1/2B	LF	1/1	1
PZ6E5525BL00	0-25 bar	G1/2B	LF	1/1	1
PZ6E5540BL00	0-40 bar	G1/2B	LF	1/1	1
PZ6E5644BL00	0-60 bar	G1/2B	LF	1/1	1
PZ6E5648BL00	0-100 bar	G1/2B	LF	1/1	1
PZ6E5654BL00	0-160 bar	G1/2B	LF	1/1	1
PZ6E5660BL00	0-250 bar	G1/2B	LF	1/1	1
PZ6E5666BL00	0-400 bar	G1/2B	LF	1/1	1
PZ6E5670BL00	0-600 bar	G1/2B	LF	1/1	1
PZ6E5672BL00	0-1000 bar	G1/2B	LF	1/1	1
PZ6E5673BL00	0-1600 bar	G1/2B	LF	1/1	1



MXG1-160

DN160 pressure gauges.

Part No	Pressure Range	Connection Options*	Box/Master	Min. order
	-1/0 bar	G1/2B	1/1	1
	-1/0.6 bar	G1/2B	1/1	1
	-1+1.5 bar	G1/2B	1/1	1
	-1+3 bar	G1/2B	1/1	1
	-1+5 bar	G1/2B	1/1	1
	-1+9 bar	G1/2B	1/1	1
	-1+15 bar	G1/2B	1/1	1
	0-0.6 bar	G1/2B	1/1	1
	0-1 bar	G1/2B	1/1	1
	0-1.6 bar	G1/2B	1/1	1
PZ6E7503BL00	0-2.5 bar	G1/2B LF	1/1	1
PZ6E7504BL00	0-4 bar	G1/2B LF	1/1	1
PZ6E7506BL00	0-6 bar	G1/2B LF	1/1	1
PZ6E7510BL00	0-10 bar	G1/2B LF	1/1	1
PZ6E7516BL00	0-16 bar	G1/2B LF	1/1	1
PZ6E7525BL00	0-25 bar	G1/2B LF	1/1	1
PZ6E7540BL00	0-40 bar	G1/2B LF	1/1	1
PZ6E7644BL00	0-60 bar	G1/2B LF	1/1	1
PZ6E7648BL00	0-100 bar	G1/2B LF	1/1	1
	0-160 bar	G1/2B LF	1/1	1
PZ6E7660BL00	0-250 bar	G1/2B LF	1/1	1
PZ6E7666BL00	0-400 bar	G1/2B LF	1/1	1
PZ6E7670BL00	0-600 bar	G1/2B LF	1/1	1
PZ6E7672BL00	0-1000 bar	G1/2B LF	1/1	1
PZ6E7673BL00	0-1600 bar	G1/2B LF	1/1	1

*Options included

LF = Fimet Watts logo on the dial

Customizations per minimum order quantity

Customizations	Model
Test Certificate (max 600 bar)	MXG1-63/100/160
Atex Certificate	MXG1-63/100/160
QX = Special sections dial	MXG1-63/100/160

QX - Scale range on dial

Range mbar	No of division	Scale interval
-1-0	0.02	50
-1 +0.6	0.02	80
-1+1.5	0.05	50
-1+3	0.1	40
-1+5	0.1	60
-1+9	0.2	50
-1+15	0.2	80

Range Low	No of division	Scale interval
0- 0.6	0.01	60
0-1	0.02	50
0- 1.6	0.02	80

Range Medium	No of division	Scale interval
0-2.5	0.05	50
0-4	0.1	40
0 - 6	0.1	60
0 - 10	0.2	50
0 - 16	0.2	80
0 - 25	0.5	50
0 - 40	1	40

Range High	No of division	Scale interval
0 - 60	1	60
0 - 100	2	50
0 - 160	2	80
0 - 250	5	50
0 - 400	10	40
0 - 600	10	60
0 - 1000	20	50
0 - 1600 *	50	32

* Available only DN100 and DN160

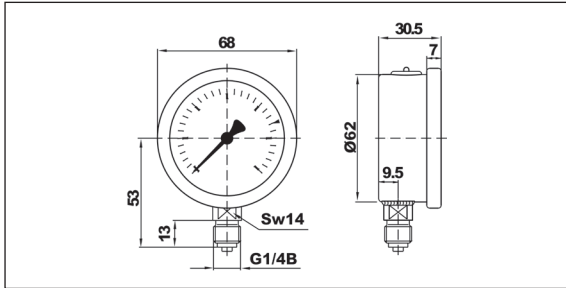
Features

Materials	
Case	Stainless steel with pressure relief device AISI 304 with adjustment hole
Window	Safety glass
Dial	White aluminium, black scale and graduation
Pointer	Aluminium, black
Pressure connection	Stainless steel AISI 316L
Pressure element	Bourdon tube stainless AISI 316L ≤ 60 bar circle > 60 bar helical
Movement	Stainless steel
Liquid filling	Glycerine 99.5%

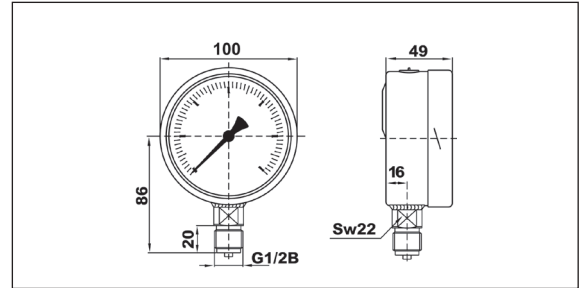
Technical features	DN 63	DN 100-160
Design	<i>EN 837-1</i>	<i>EN 837-1</i>
Working pressure	Steady: 75% of full scale value Fluctuating: 60% of full scale value Short time: full scale value	Steady: 75% of full scale value Fluctuating: 60% of full scale value Short time: full scale value
Temperature limits	Ambient: -10 ... +60 °C; Medium: +100°C maximum Storage: -10 ... +60 °C	Ambient: -10 ... +60 °C; Medium: +100°C maximum Storage: -10 ... +60 °C
Temperature effect	Deviation from reference temperature (+20°C): ±0,04%/1K of the span	Deviation from reference temperature (+20°C): ±0,04%/1K of the span
Accuracy class	cl. 1.6	cl. 1.0
Degree of protection	IP 65	IP 65
Individual weight:		
MXG1-63	0.300 kg	0.300 kg
MXG1-100	1.100 kg	1.100 kg
MXG1-160	1.800 kg	1.800 kg

Overall dimensions (mm)

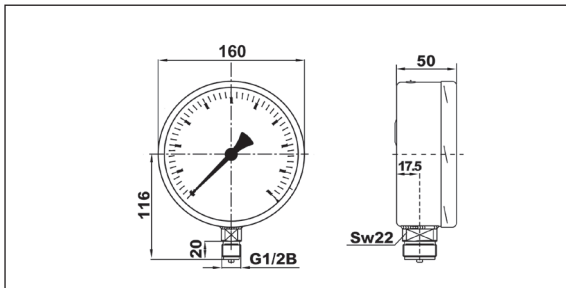
MXG1-63



MXG1-100



MXG1-160



Specification text

Bourdon tube **all stainless steel** pressure gauge **MXG1 Series**, Watts Brand, for special industrial applications, chemical, food and shipbuilding industries. **Glycerin filled all stainless steel case** DN 63-100-160 mm, **bottom connection**. Vacuum measures range -1/0 at high pressure up to 1000 bar (DN 63). Vacuum measures range -1/0 at high pressure up to 1600 bar (DN 100-160). Temperature limits +100°C. Accuracy class 1.6 (DN 63) – 1.0 (DN 100-160). **Compliant with EN 837-1.**



The descriptions and photographs contained in this product specification sheet are supplied by way of information only and are not binding.
Watts Industries reserves the right to carry out any technical and design improvements to its products without prior notice. Warranty: All sales and contracts for sale are expressly conditioned on the buyer's assent to Watts terms and conditions found on its website at www.wattswater.eu. Watts hereby objects to any term, different from or additional to Watts terms, contained in any buyer communication in any form, unless agreed to in a writing signed by an officer of Watts.



Watts Industries Italia S.r.l.
Via Brenno, 21 • 20853 Biassono (MB) • Italy
Tel. +39 039 4986.1 • Fax +39 039 4986.222
infowattsitatia@wattswater.com • www.watts.com